
camira

style with substance

www.camirafabrics.com

Lucia CS



Panels



Curtains



Acoustic



M1 / B1



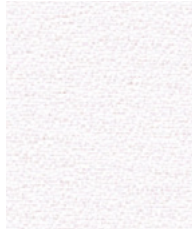
Year guarantee

Highlighted shades are available from stock. Other colourways are available in 10 - 15 working days.

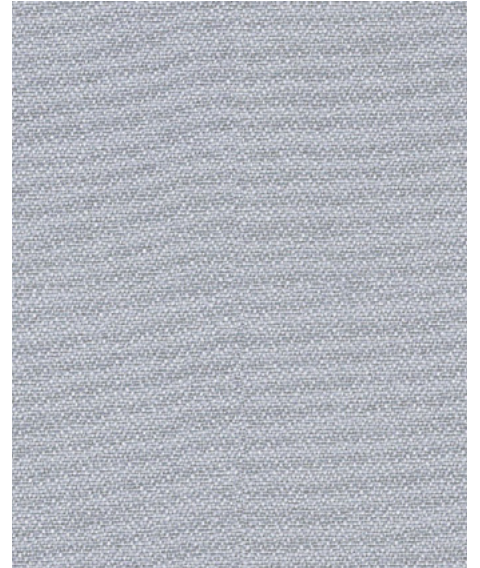
Photographic fabric scans are not colour accurate. Always request actual fabric samples before ordering.



Varadero
LC434



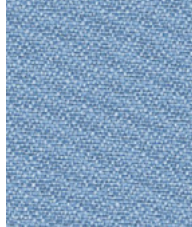
Adobo
LC165



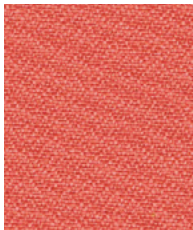
Rum
LC173



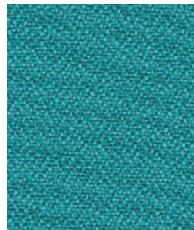
Aruba
LC108



Medan
LC422



Bima
LC425



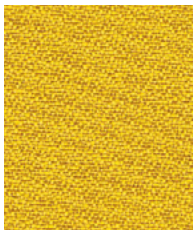
Depok
LC421



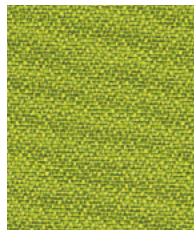
Honduras
LC455



Slip
LC094



Kota
LC415



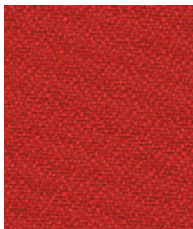
Tenom
LC419



Blanquilla
LC456



Blizzard
LC081



Panama
LC079



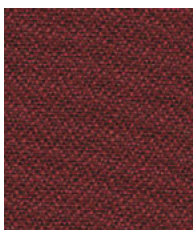
Roques
LC433



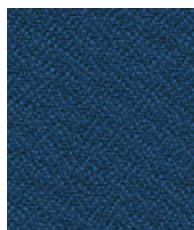
Palu
LC414



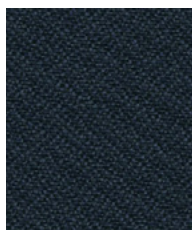
Revive
LC182



Negril
LC175



Makili
LC424



Costa
LC026



Havana
LC009

Lucia CS - Product information

Lucia CS has been engineered from 100% Trevira CS® yarn and is an inherently flame retardant version of our popular screen fabric Lucia. We have created a sophisticated colour palette that effortlessly coordinates with Xtreme CS and adopts some of our most popular colourways.

This fabric is largely acoustically transparent and as such is ideal to be used as a decorative facing for sound absorbing boards.



Technical information

UK

Composition

100% Trevira CS® Flame Retardant Polyester
Non metallic dyestuffs

Environment

Certified to OEKO-TEX® Standard 100

Width

170 cm minimum

Weight

265 g/m² ±5% (450 g/lin.m ±5%)

Flammability

EN 1021-1 (cigarette)
EN 1021-2 (match)
BS 7176 Low Hazard
DIN 4102 B1
BS 476 Part 7 Class 1
BS 476 Part 6 Class 0
EN 13501-1 Adhered Class B, s1, d0
EN 13501-1 Un-adhered Class B, s1, d0
NF P 92-507 M1
UNI 8456, UNI 9174 & UNI 9177 Classe Uno
BS 5867-2: Type B Curtains & Drapes

Note: Flammability performance is dependent on components used.

Light Fastness

6 (ISO 105 - B02)

Fastness to Rubbing

Wet: 4, Dry: 4 (ISO 105 - X12)

Acoustic Properties

Acoustically transparent, Acoustic graphs available upon request

Cleaning

Vacuum regularly. Wipe clean with a damp cloth or shampoo using proprietary upholstery shampoo.

Please note that seam performance is dependent on seam construction and needle and thread type. We recommend that appropriate sewing advice be taken.

Batch to batch variations in shade may occur within commercial tolerances. We reserve the right to alter technical specifications without notice. The Unregistered Design Rights and the Copyright in all designs are the exclusive property of Camira Fabrics Limited.

D

Zusammensetzung

100% Trevira CS® Schwerentflammbare Polyester
Nicht schwermetallhaltige Farbstoffe

Umweltfreundlich

Nach Zertifikat OEKO-TEX® Standard 100

Breite

170 cm nutzbare Breite

Gewicht

265 g/m² ±5% (450 g/ldf.M ±5%)

Feuersicherung

EN 1021 - 1 (Zigarettestest)
EN 1021 - 2 (Streichholztest)
BS 7176 Low Hazard
DIN 4102 B1
BS 476 Part 7 Class 1
BS 476 Part 6 Class 0
EN 13501-1 Adhered Class B, s1, d0
EN 13501-1 Un-adhered Class B, s1, d0
NF P 92-507 M1
UNI 8456, UNI 9174 & UNI 9177 Classe Uno
BS 5867-2: Type B Curtains & Drapes

Bemerkung: Schwerentflammbarkeit hängt von verwendetem Schaum ab.

Lichtechtheit

6 (ISO 105 - B02)

Reibechtheit

Nass: 4, Trocken: 4 (ISO 105 - X12)

Akustische Eigenschaften

Akustisch durchlässig, Akustische Messwerte auf Anfrage

Reinigung

Regelmässig staubsaugen. Dazu mit einem feuchten Tuch abwischen, oder mit einem speziellen Polsterschaum behandeln.

Eine optimale Nahtausreissfestigkeit hängt von der Nahtfahne, der verwendeten Nadel und dem Näh-Garn ab. Wir empfehlen daher Nähversuche durchzuführen.

Handelsübliche Farbabweichungen können auftreten und berechtigen nicht zur Reklamation. Wir behalten uns die Änderung technischer Spezifikationen vor. Die registrierten und nicht registrierten Urheberrechte der Dessinierungen sind ausschliessliches Eigentum der Camira Fabrics Limited.

Contact

UK Head Office:	+44 (0)1924 490491
France/Belgium	+32 56 227 266
Germany:	+49 7031 60 84 30
Scandinavia:	+45 32 55 20 01
Netherlands:	+31 7361 25120
USA:	+1 616 288 0655
China:	+ 86 (0) 21 6133 1812

www.camirafabrics.com



F

Composition

100% Trevira CS® Polyester retardateur de flamme
Teintures non métalliques

Écologique

Certifié à OEKO-TEX® Standard 100

Largeur

170 cm minimum

Poids

265 g/m² ±5% (450 g/m.l ±5%)

Flammabilité

EN 1021 - 1 (cigarette)
EN 1021 - 2 (allumette)
BS 7176 Low Hazard
DIN 4102 B1
BS 476 Part 7 Class 1
BS 476 Part 6 Class 0
EN 13501-1 Adhered Class B, s1, d0
EN 13501-1 Un-adhered Class B, s1, d0
NF P 92-507 M1
UNI 8456, UNI 9174 & UNI 9177 Classe Uno
BS 5867-2: Type B Curtains & Drapes

Note: Le comportement non-feu dépend de la mousse utilisée. .

Solidité à la lumière

6 (ISO 105 - B02)

Solidité au Frottement

Mouillé: 4, Sec: 4 (ISO 105 - X12)

Propriétés Acoustiques

Acoustiquement transparent, graphiques acoustiques disponibles sur demande

Nettoyage

Aspirer régulièrement. Essuyer avec une étoffe humide ou nettoyer à l'aide d'un produit approprié pour tissus d'ameublement.

Veillez noter que la performance du joint dépend de sa construction ainsi que de l'aiguille et du type de fil utilisés.

une variation de couleurs peut provenir (commercialement tolérable). Nous réservons le droit de changer les spécifications techniques sans préavis. Les Droits de Conception non-enregistrés et les droits d'auteur de tous les motifs sont la propriété exclusive de Camira Fabrics Limited.

ES

Composició

100% Trevira CS® Poliéster resistente al fuego
Tintes no metálicos

Ambiental

Certificado de OEKO-TEX® Standard 100

Ancho

170 cm mínimo

Peso

265 g/m² ±5% (450 g/lin.m ±5%)

Inflamabilidad

EN 1021 - 1 (cigarillo)
EN 1021 - 2 (cerilla)
BS 7176 Low Hazard
DIN 4102 B1
BS 476 Part 7 Class 1
BS 476 Part 6 Class 0
EN 13501-1 Adhered Class B, s1, d0
EN 13501-1 Un-adhered Class B, s1, d0
NF P 92-507 M1
UNI 8456, UNI 9174 & UNI 9177 Classe Uno
BS 5867-2: Type B Curtains & Drapes

Nota: El grado de Inflamabilidad depende del tipo de foam utilizado.

Solidez a la luz

6 (ISO 105 - B02)

Solidez al rozamiento

Húmedo: 4, Seco: 4 (ISO 105 - X12)

Acústico Propiedades

Acústicamente transparente, gráficos disponibles bajo petición

Limpieza

Limpiar con aspiradora frecuentemente. Bien lavar con un paño húmedo o con un champú apropiado para tapicería.

Tenga en cuenta que el rendimiento de la costura depende de la construcción de la costura, además de la aguja y del tipo de rosca. Le recomendamos que se aconsejen para coser la costura.

las variaciones de lote a lote en la sombra se puede producir dentro de tolerancias comerciales. Nos reservamos el derecho a efectuar modificaciones técnicas sin previo aviso. Los derechos sobre los diseños no registrados y los derechos de autor en todos los diseños son propiedad exclusiva de Camira Fabrics Limited.